

# Mid-Year Impact Report: Education Programming

**2023-2024**

August-December

Written by:

Whitney R. Wright, Director of Education



03  
OVERVIEW



04  
CEI'S MISSION AND VALUES



05-07  
PROGRESS UPDATES



08  
IMPACT: STUDENT NARRATIVES



09  
IMPACT: STUDENT LEARNING

10  
IMPACT: PARTNERSHIPS



11  
EXPANDING IMPACT



The families Chester Eastside, Inc. (CEI) serve are inspiring and my dedication to the City of Chester has deepened. For those reasons, I am humbled and thrilled to share the developments made and the proposed direction of education programming at CEI. Several positive changes are taking place that build on the program's rich history. There is now a concentrated focus for our youth and adult programming towards career, technical education, and wellness; both virtually and in-person.

Students in grades K-12 participating in CEI's Out-of-School Program experience a hot meal, recreation time, enrichment activities, homework help, and reading and math interventions. The enrichment activities are geared towards science, technology, engineering, art, and mathematics (STEAM) as well as social and emotional learning (SEL). Specifically, as it relates to STEAM, students have hands-on experiences with coding, environmental science, solar engineering, aviation engineering, and agriculture during enrichment time. Our developing adult programs will focus on high school equivalency, career readiness, and mindfulness.

This Impact Report includes CEI's mission and values statements, highlights progress updates, student narratives, student achievements, community partnerships, and aspirations towards expanding our impact.



## **Who We Are**

Chester Eastside, Inc. works to help children and families by providing access to hunger safety net programs and a safe environment for adult and youth education and exploration. CEI's mission is to be a welcoming and inclusive community that enables individuals of all ages to achieve their goals and aspirations, promoting a peaceful co-existence in Chester through advocacy and programs for education, social services, and justice.

## **Our Values:**

### **Integrity**

We are committed to operating with integrity in everything we do.

### **Social Justice**

We believe in fostering and advocating for a just community that ensures all Chester residents are treated with dignity.

### **Love and Respect**

We maintain an environment that is grounded in love and respect for all people.

The Out-of-School Program adopted a new curriculum. IXL Learning provides targeted math and literacy interventions. With IXL, we are able to track student growth using diagnostics and benchmark assessments. We plan to rely on IXL to support developing programs offered virtually.



IXL Offers the following: Math, Language Arts, Science Social Studies, Spanish, ACT, PSAT, SAT, Adult Learning, and much more.

CEI uses the math and language arts features.

Enrollment has increased. When the program started in September of 2023, nearly 22 students were enrolled. As of December, 37 students are enrolled.

<b>Student Enrollment</b>	Black	Hispanic
In-person	17	18
Virtual	0	2
Total	37	

The program has a new team. Collectively, we bring an array of skills that are complimentary to the program's current needs.



### **Whitney Wright**

Director of Education

**Summary:** Experienced K-12 classroom educator and school administrator.

**Highlighted skills:** Strategic planning, curriculum development, professional development, and diversity, inclusion, and equity.

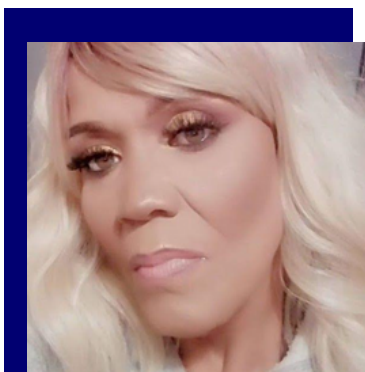


### **Raheem Curry**

Program Educator

**Summary:** Experienced leader working with youths in the nonprofit sector.

**Highlighted skills:** Working with diverse populations, arts, and music education.



### **Sonya Hazelett**

Program Educator

**Summary:** Experienced counselor and case manager for youths and adults.

**Highlighted skills:** Fluent in Spanish, wellness, and English as a Second Language (ESL).

The physical space of the program underwent updates as well. Efforts were put forth to clean and brighten the space.



Research suggests that students thrive in a safe and clean learning environment.





We measure the impact of the Out-of-School Program by collecting data from student interviews and IXL learning outcomes. We periodically interview our students to gather data about their experiences in our program. Below are a few narratives.



## 4th Grade Student

How does being at CEI make you feel?

"I feel happy. I feel very happy and welcomed."



## 3rd Grade Student

What is your favorite part about being at CEI?

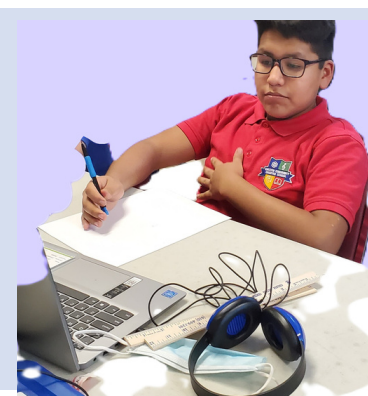
"Learning about reading and math, and I wanna learn IXL too."



## 4th Grade Student

What do you like about Chester Eastside?

Everyone's having fun. Everyone's sharing, nice and being kind.

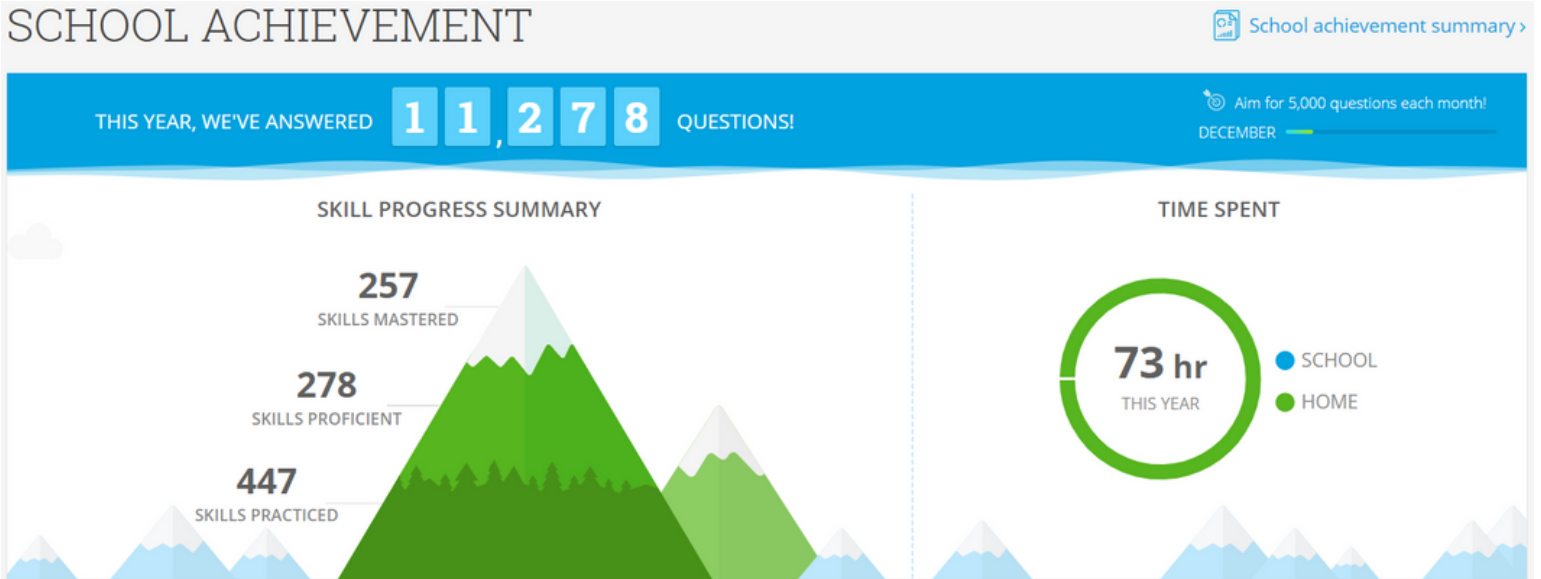


## 8th Grade Student

What have you learned about getting along with others here?

Getting along... that getting along with others is really helpful and comes in various forms.

IXL tracks student achievement. Below are a few examples.



#### Questions answered per student per week

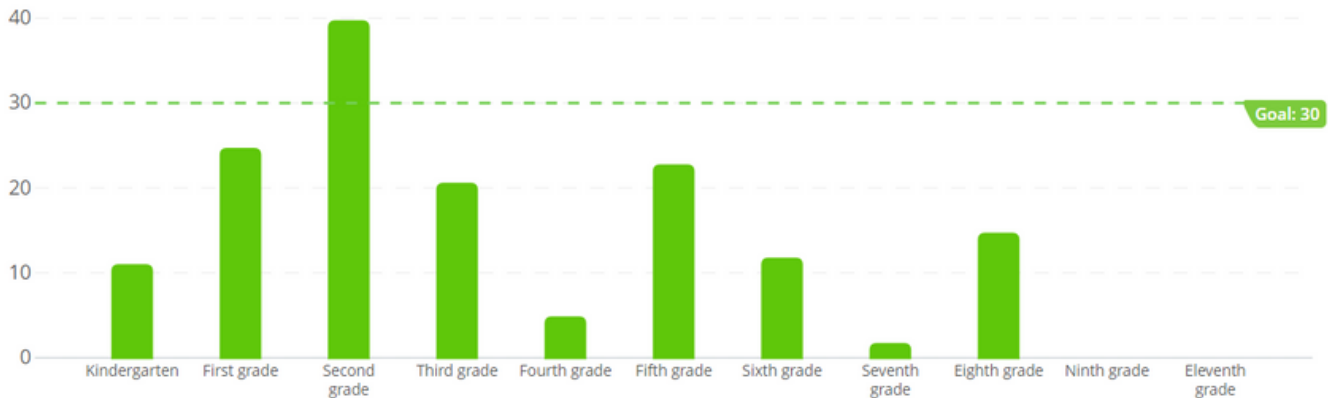
Research suggests answering 15+ questions per week in a subject to boost learning. Answering even more questions leads to higher gains!

Total questions answered  
**11,278**

Total time spent practicing  
**74 hours**

#### Questions answered per student per week

Weekly average



Another measure of impact is the increase in the number of partnerships we have made with area universities and other nonprofits. These partnerships support program expansion and increases our volunteer base. Below are a few of the new and return partnerships.



## **9th Street YCC**

Environmental Justice and Career Awareness Related Programming



## **Chester Chapter of the NAACP**

Environmental Justice and Recycling Related Programming



## **Chester Upland Youth Soccer**

Field Trips and Clubs



## **Cheyney University**

Volunteers and Program Support



## **Penn State Brandywine**

Gardening and Nutrition Related Student and Adult Programming



## **Swarthmore College: Good Energy Collaborative**

Solar Energy and Career Awareness Related Programming



Looking ahead, there are hopes to expand our capacity to support more students in the community and to develop our adult programs. Its aspirational, but broadly, CEI will acquire a facility or develop a campus that is best accessible for persons with disabilities and can accommodate youth and adult programming operating simultaneously.

To support expansion, strategic efforts to increase revenue, meaningful efforts at retaining and developing the current qualified team, and an organizational chart may need to be considered.

As education programs move forward, we will continue to focus on CEI's mission and vision, while perfecting and growing the existing programs as well as nurturing and pursuing new community partnerships.

I am sincerely appreciative of the Board and the community's confidence in me. Excitement and newness is in abundance.